

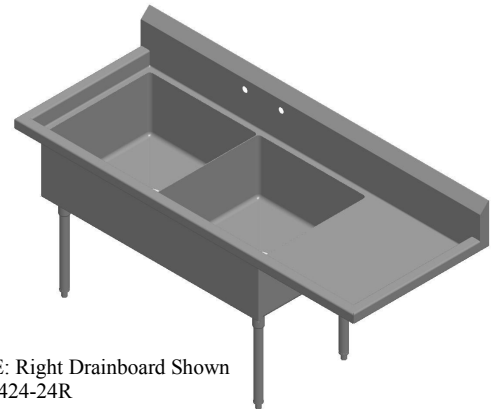
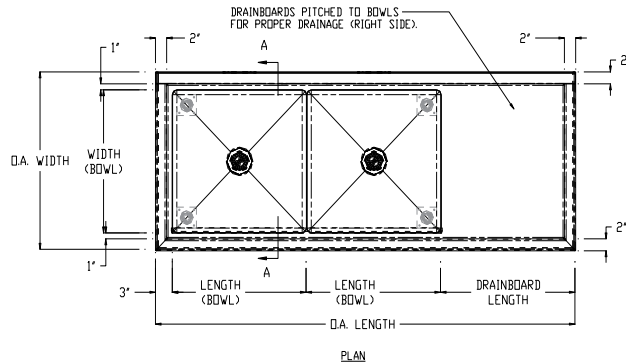


TWO COMPARTMENT SINKS W/ ONE DRAINBOARD

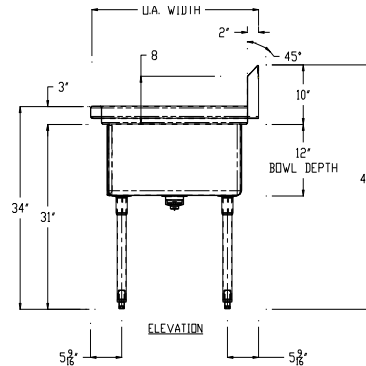
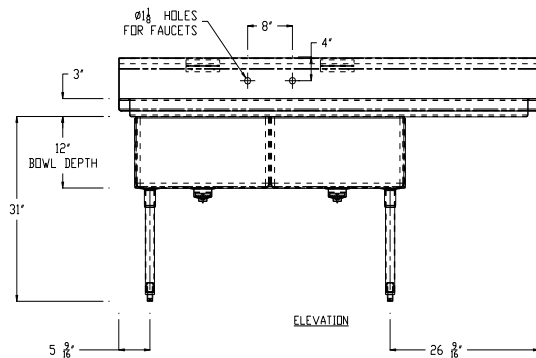
PROJECT#: _____

ITEM# _____

MODEL# _____



NOTE: Right Drainboard Shown
C-2-2424-24R



| MODEL# | QTY | LENGTH (BOWL) | WIDTH (BOWL) | DRAINBOARD LENGTH | O.A. LENGTH | O.A. WIDTH | OVERALL HEIGHT |
|--------------|-----|---------------|--------------|-------------------|-------------|------------|----------------|
| C-2-1618-18R | | 16" | 18" | 18" ON RIGHT | 53" | 24" | 41" |
| C-2-1618-18L | | 16" | 18" | 18" ON LEFT | 53" | 24" | 41" |
| C-2-1618-24R | | 16" | 18" | 24" ON RIGHT | 59" | 24" | 41" |
| C-2-1618-24L | | 16" | 18" | 24" ON LEFT | 59" | 24" | 41" |
| C-2-1824-18R | | 18" | 24" | 18" ON RIGHT | 67" | 30" | 41" |
| C-2-1824-18L | | 18" | 24" | 18" ON LEFT | 67" | 30" | 41" |
| C-2-1824-24R | | 18" | 24" | 24" ON RIGHT | 63" | 30" | 41" |
| C-2-1824-24L | | 18" | 24" | 24" ON LEFT | 63" | 30" | 41" |
| C-2-2424-18R | | 24" | 24" | 18" ON RIGHT | 69" | 30" | 41" |
| C-2-2424-18L | | 24" | 24" | 18" ON LEFT | 69" | 30" | 41" |
| C-2-2424-24R | | 24" | 24" | 24" ON RIGHT | 75" | 30" | 41" |
| C-2-2424-24L | | 24" | 24" | 24" ON LEFT | 75" | 30" | 41" |
| | | | | | | | |
| | | | | | | | |

SINK SPECIFICATIONS:

TOP: 16 GA. 300 Series Stainless Steel

SINK BOWLS: 16 GA. 300 Series Stainless Steel

LEGS: 1 5/8" Diameter Stainless Steel Tubing

CONSTRUCTION:

- ♦ Fully welded, Seamless, Polished to #4 Finish
- ♦ Euro Edge
- ♦ S/S Adjustable Bullet Feet
- ♦ Crumb Cup Drain 1 1/2" IPS
- ♦ 8" On Center Faucet Holes
- ♦ Ships with (2) Wall Mount "Z" Clips
- ♦ Integral 10" Tall Backsplash